

17-2-17

ECLIPTIC OUT

URANUS PROBLEMS

NIBIRU – SECOND SUN SECOND PICTURE

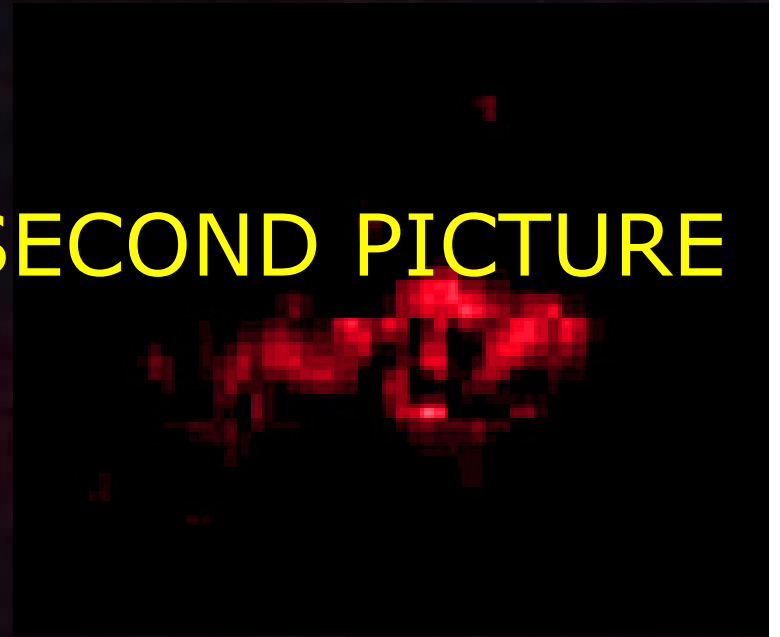


PHOTO 003_NEF time 20:49 17-2-2017
55 mm
HORIZON on Horizontal line

Menkar



o PSC 8198



uranus



Mars



Venus

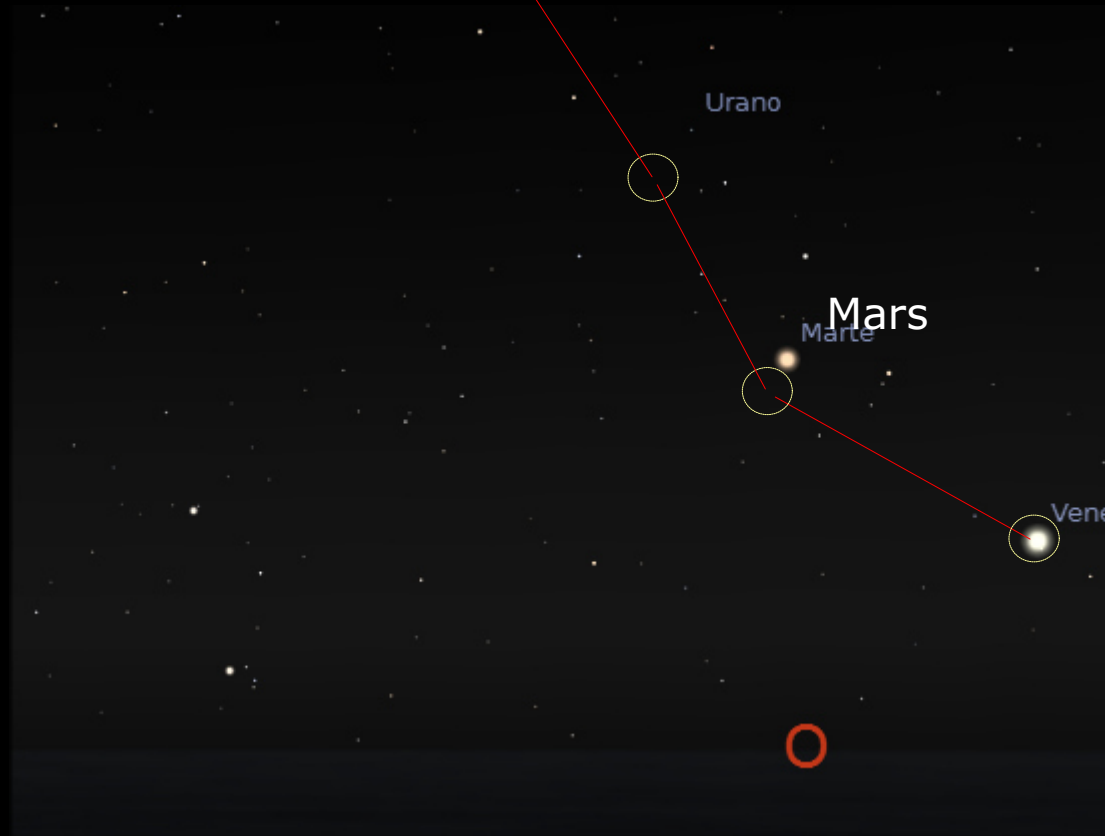


PHOTO 003_NEF time 20:49 17-2-2017
HORIZON on Horizontal line

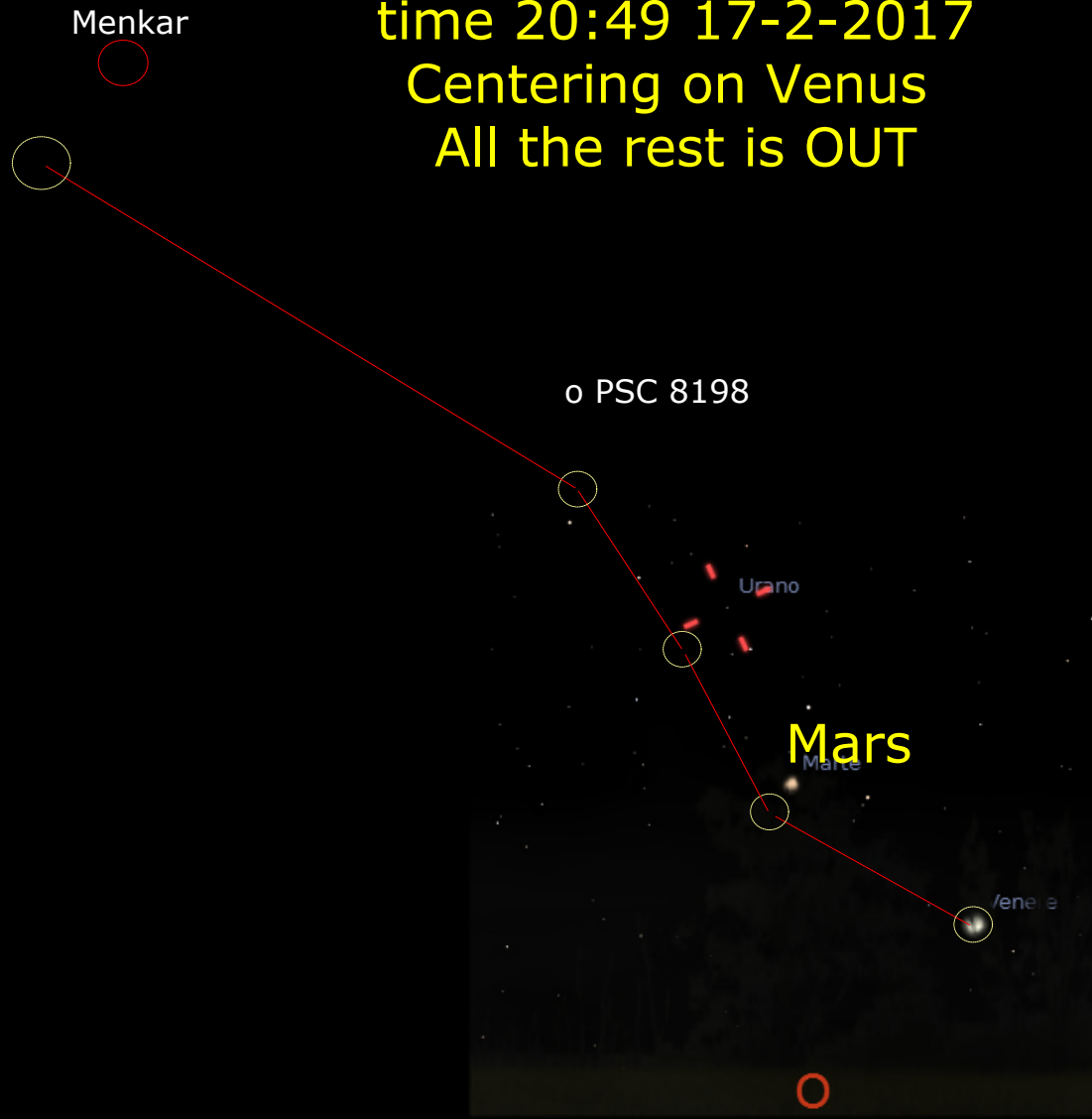
WE GO NOW AND SEE THE STELLARIUM SIMULATION SW

SETTING THE CORRECT
LATITUDE
LONGITUDE
HEIGHT
TIMING

time 20:49 17-2-2017
Centering on Venus
All the rest is OUT



time 20:49 17-2-2017
Centering on Venus
All the rest is OUT



o PSC 8198

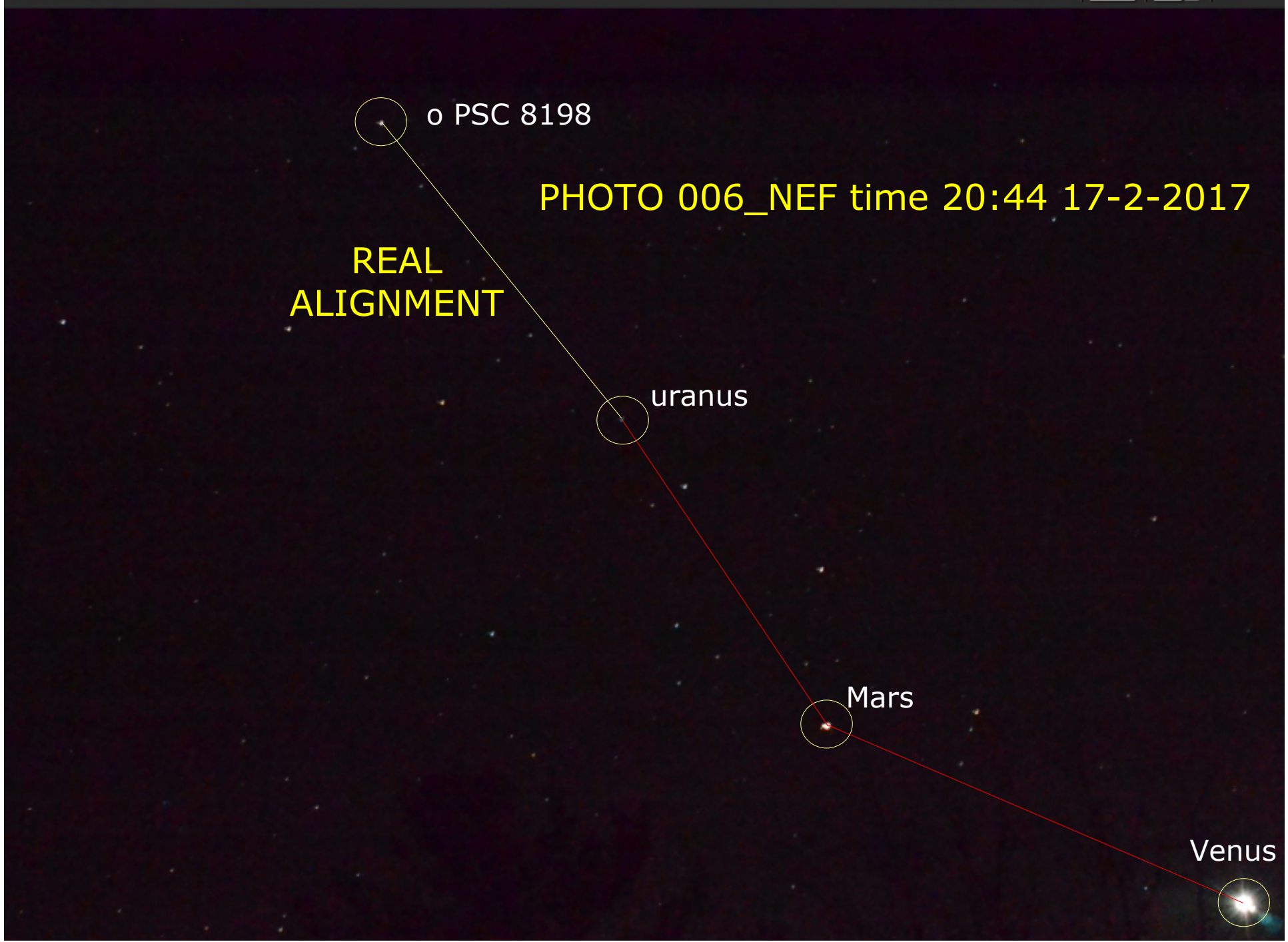
PHOTO 006_NEF time 20:44 17-2-2017

REAL ALIGNMENT

uranus

Mars

Venus



REAL
ALIGNMENT

Urano

SIMULATED AS IT SHOULD BE

Marte

Venere

006_NEF time 20:44 17-2-2017
Centering on VENUS the Ecliptic
is OUT of about 14° bent on the
position where the SECOND
SUN was coming since 2013



SIMULATED AS IT SHOULD BE

REAL ALIGNMENT

ECLIPTIC PLANE at 17-Feb 2017
~ 14° OUT ?

ANOTHER POINT OF VIEW
Centering on Mars the Ecliptic is
OUT of about 14°, bent on the
position where the SECOND SUN
was coming since 2013



ECLIPTIC PLANE at 17-Feb 2017
IS 14° OUT

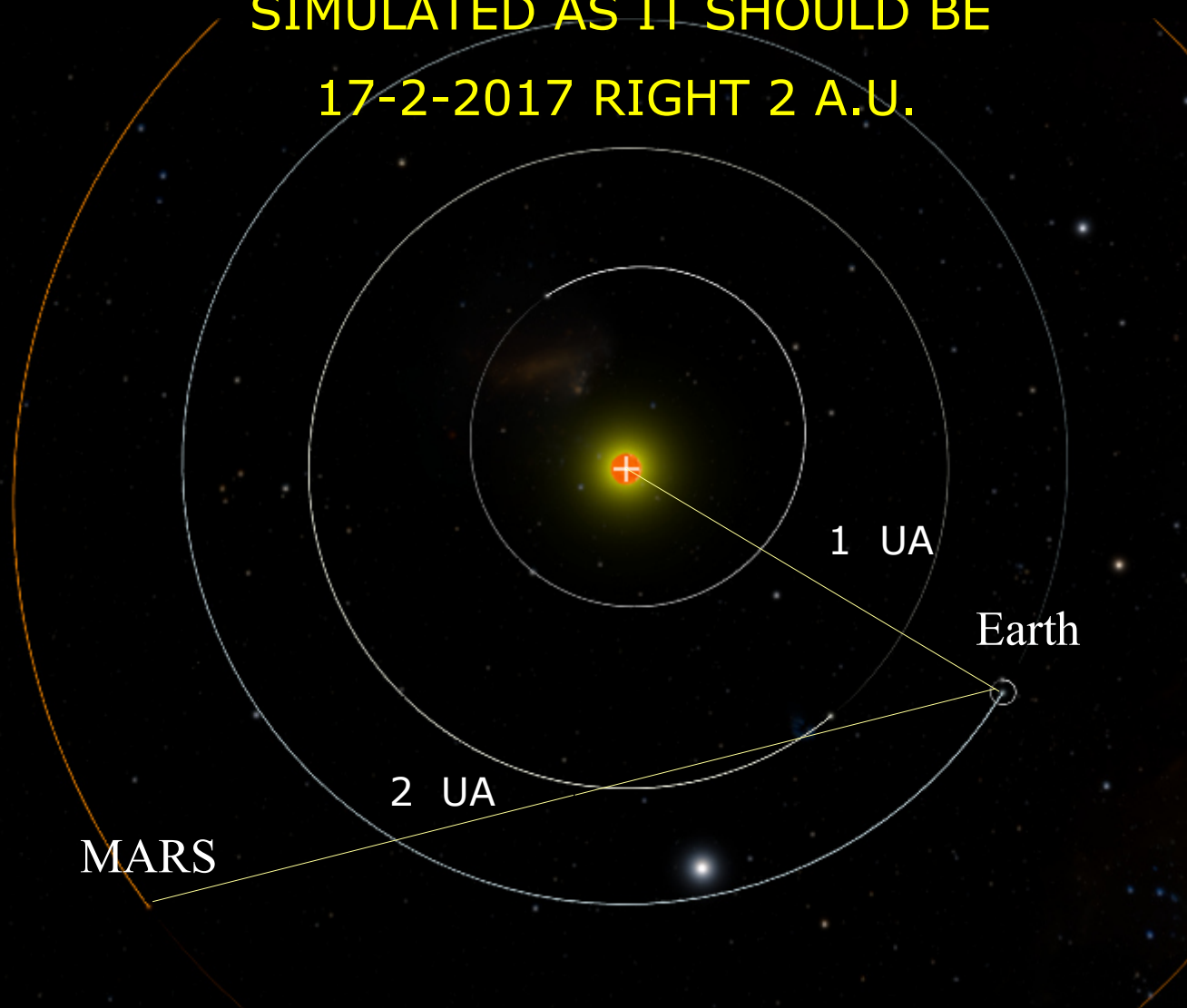
BUT WE KNOW IT WAS ~ 8,5° AT
the End of October

The ecliptic plane is continuously
bending

WHY?

WHAT'S HAPPENING HERE?
Maybe this is only a parallel axis
photos problem
LET'S ANALIZES OTHER BITS

MARS TO EARTH DISTANCE
SIMULATED AS IT SHOULD BE
17-2-2017 RIGHT 2 A.U.



MARS

Earth

1 UA

2 UA

URAN 19 UA apparent diameter should be 3,62 " arcsecond decimal

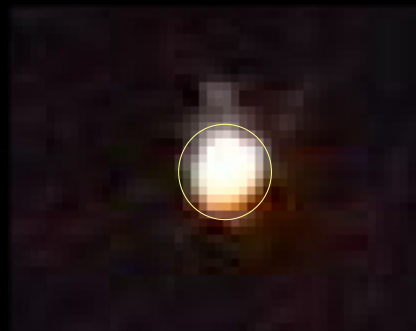
MARS 2 UA apparent diameter should be 4,68" arcsecond decimal

Theoretical Ratio IN THE REAL SKY: 1,3

While with same zooming from photo

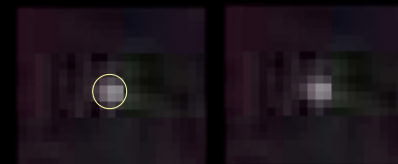
003_NEF time 20:52 17-2-2017

MARS



1,26cm

URAN



0,45 cm

Real Ratio 2,8

**We cannot even say Mars was amplified
by the atmosphere lens on the horizon**

Let's see it in another way now

URAN towards stars

010_NEF time 20:52 17-2-2017
OPTICAL Zoom set to 200 mm

URAN



ζ psc A
Mag 5.2



88 psc





URAN

010_NEF time 20:52 17-2-2017
Zoom at 200 mm + digital amplification

ζ psc A
Mag 5.2



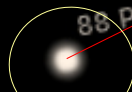
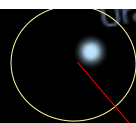
88 psc



URAN does not match

time 20:52 17-2-2017

Back sky rotated clockwise of 12°
to match the 010_NEF photo
reference



006_NEF time 20:44 17-2-2017

Let's take another opportunity

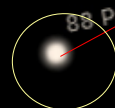


006_NEF time 20:44 17-2-2017

URAN still does not match



Back sky rotated clockwise of 12°
to match the 006_NEF photo
reference



URAN

010_NEF time 20:52 17-2-2017

Optical Zoom at 200 mm + digital amplification

x40

x1 x5

x10

x20



Comparing URANs DIMENSIONS to stars. Seems TOO BIG. WHY?

010_NEF - time 20:52 17-2-2017 star & URAN same zooming

ζ psc A (double mass)
Mag 5.2

1,5 cm = 1' 30"

URAN

1' 03" 2,43 cm 2,43

1' 03" instead of 0' 04"
65" instead of 4" ????

ζ psc A
Mag 5.2

1' 30" 3,23 cm 3,23

Ratio 2,43 : 3,23 = 0,75

15' arc = 15,76 cm (1,05 cm/ 1' arc)



Comparing URANs DIMENSIONS to stars. Seems TOO BIG. WHY?

010_NEF - time 20:52 17-2-2017 star & URAN same zooming

88 psc

1,2 cm = 1' 14"

15' arc = 15,76 cm (1,05 cm/ 1' arc)

URAN

1' 00" 2,43 cm 2,43

1' 00" instead of 0' 04"
60" instead of 4" ????

88 psc

1' 14" 3,0 cm 3,0

Ratio 2,43 : 3,0 = 0,81
74" x 0,81 = 60"

010_NEF - time 20:52 17-2-2017

URAN

2,43

2,43 cm

1' 00" instead of 0' 04"

60" instead of 4" ????

URAN should be roughly 15 times smaller

003_NEF

time 20:52 17-2-2017

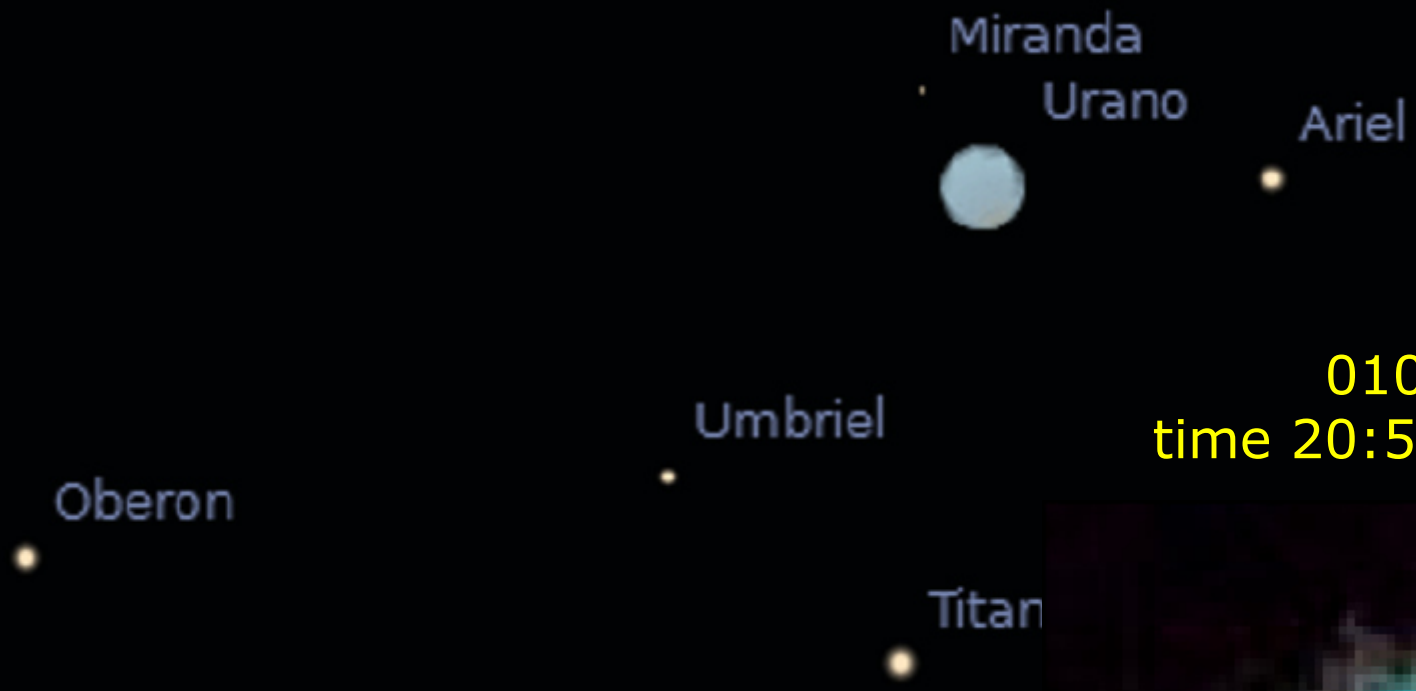
MARS



URAN



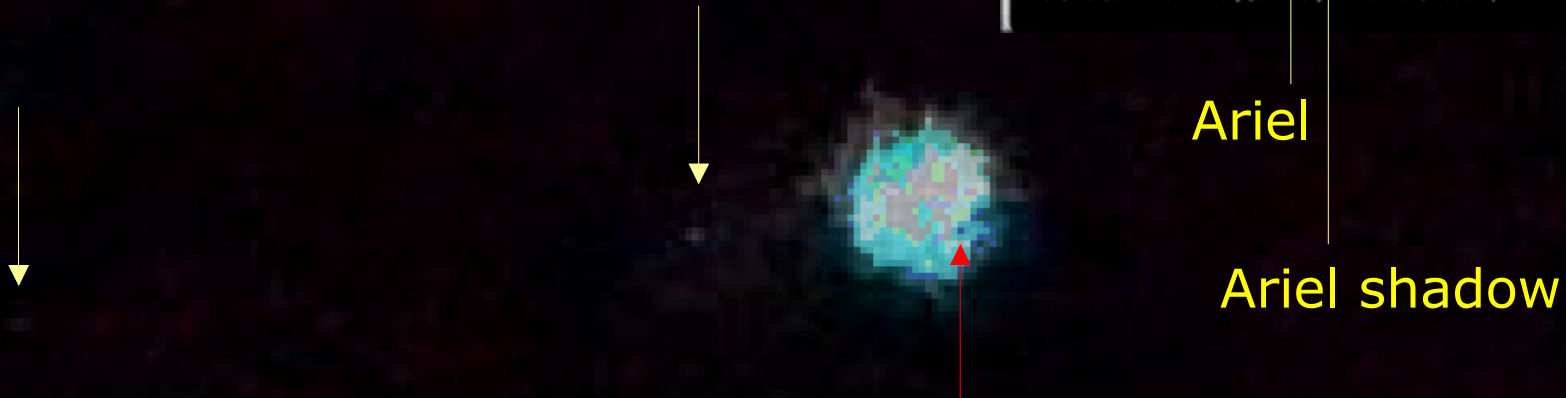
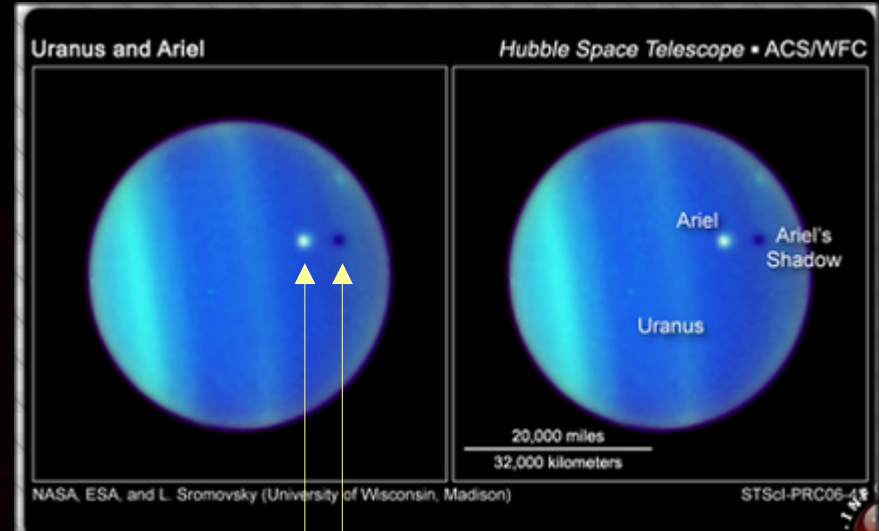
time 20:52 17-2-2017



010_NEF
time 20:52 17-2-2017



010_NEF
time 20:52 17-2-2017



Provided less definition, is it possible to see it nearly as on the Hubble telescope?

010_NEF - time 20:52 17-2-2017

Satellites should be bit bigger. If they don't Uranus is BIGGER on this photo. is it because the external atmosphere is gasing out
Showing an apparent bigger planet? Big question, plus maybe MOVING toward the SECOND SUN So coming forth to the Earth, reducing distance



surprises are not fished yet



SECOND SUN PIC TAKEN 17-2-2017

20:45 USA - East coast time - Let's see what we can get from

Camera: NIKON D3100 set to 50 mm

Uranus



ζ psc A

ϵ psc

Mars



uranus

5534

5344

6205

5387

6154

ζ psc A
Mag 5..2

5884

88 psc

5209

ϵ psc
HIP 4906
Mag 4,25



uranus

ζ psc A
Mag 5.2



ε psc
HIP 4906
Mag 4,25

SECOND SUN PIC TAKEN 17-2-2017
20:45 USA - East coast time
Let's see what we can get from



ζ psc A
Mag 5.2

REMEMEBER THIS PHOTO? SECOND SUN PIC TAKEN 25-1-2017

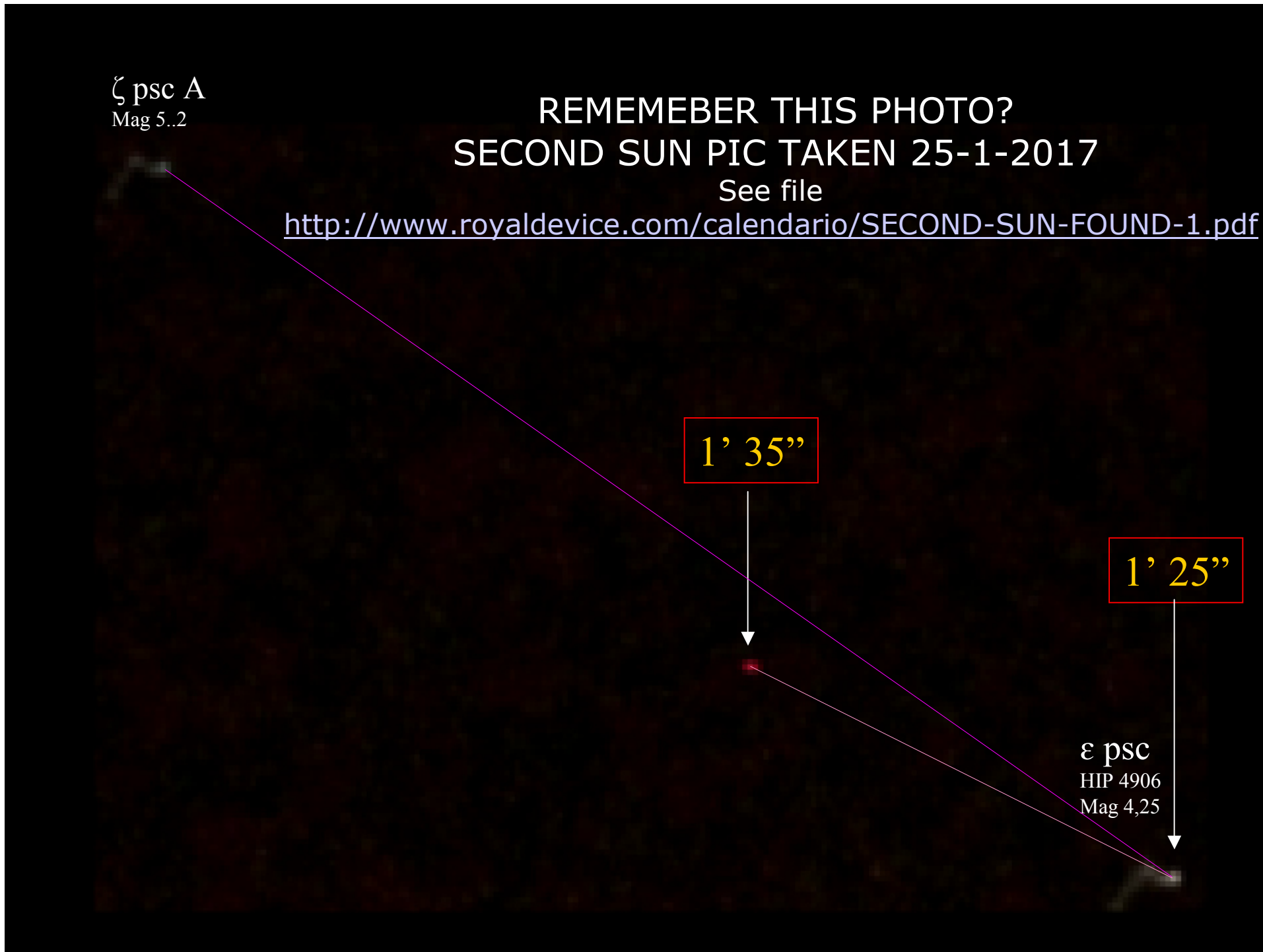
See file

<http://www.royaldevice.com/calendario/SECOND-SUN-FOUND-1.pdf>

1' 35"

1' 25"

ϵ psc
HIP 4906
Mag 4,25



013_NEF 17-2-2017 - 20:45

ζ psc A
Mag 5.2

was 1' 35"

1' 25"

ϵ psc
HIP 4906
Mag 4.25

ADDED FOR
COMPARISON
PURPOSES



ζ psc A
Mag 5.2

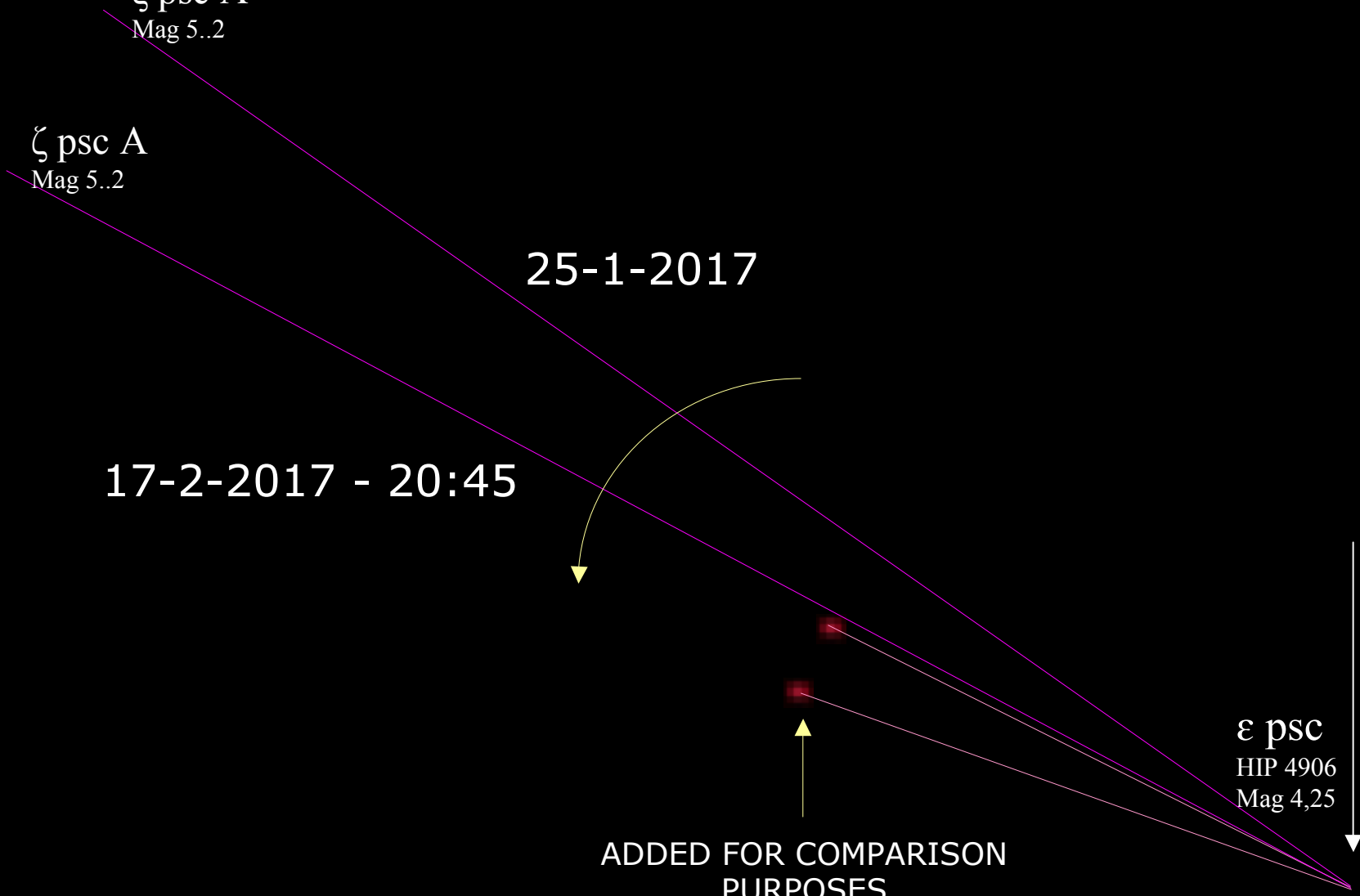
ζ psc A
Mag 5.2

25-1-2017

17-2-2017 - 20:45

ϵ psc
HIP 4906
Mag 4,25

ADDED FOR COMPARISON
PURPOSES

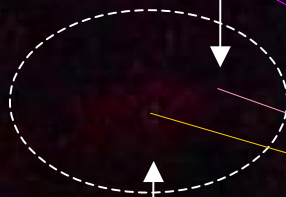


ζ psc A
Mag 5..2

013_NEF 17-2-2017 - 20:45

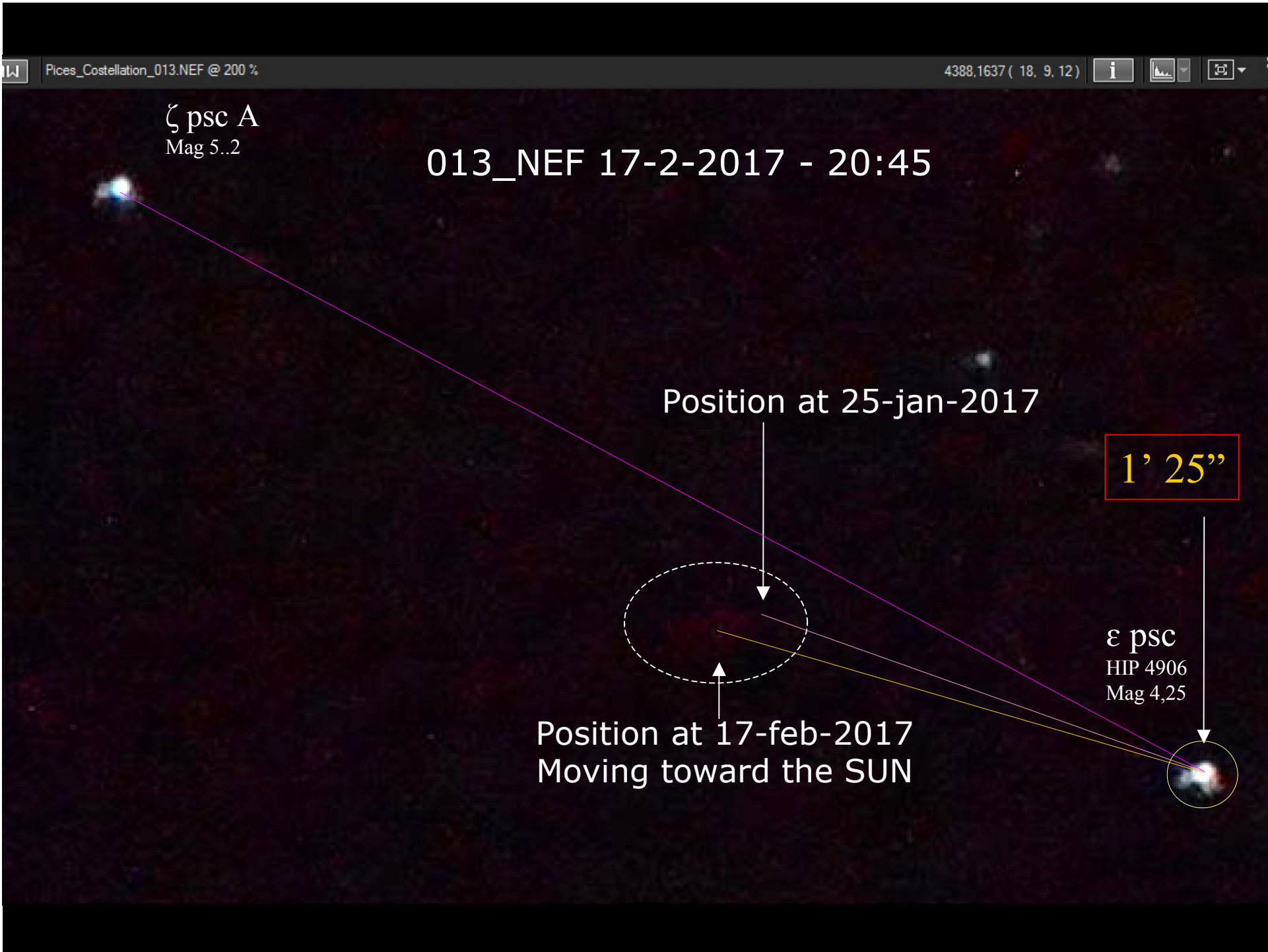
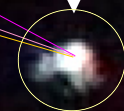
Position at 25-jan-2017

1' 25"



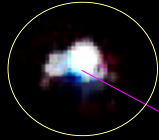
Position at 17-feb-2017
Moving toward the SUN

ϵ psc
HIP 4906
Mag 4,25



013_NEF 17-2-2017 - 20:45

HIGH CONTRAST

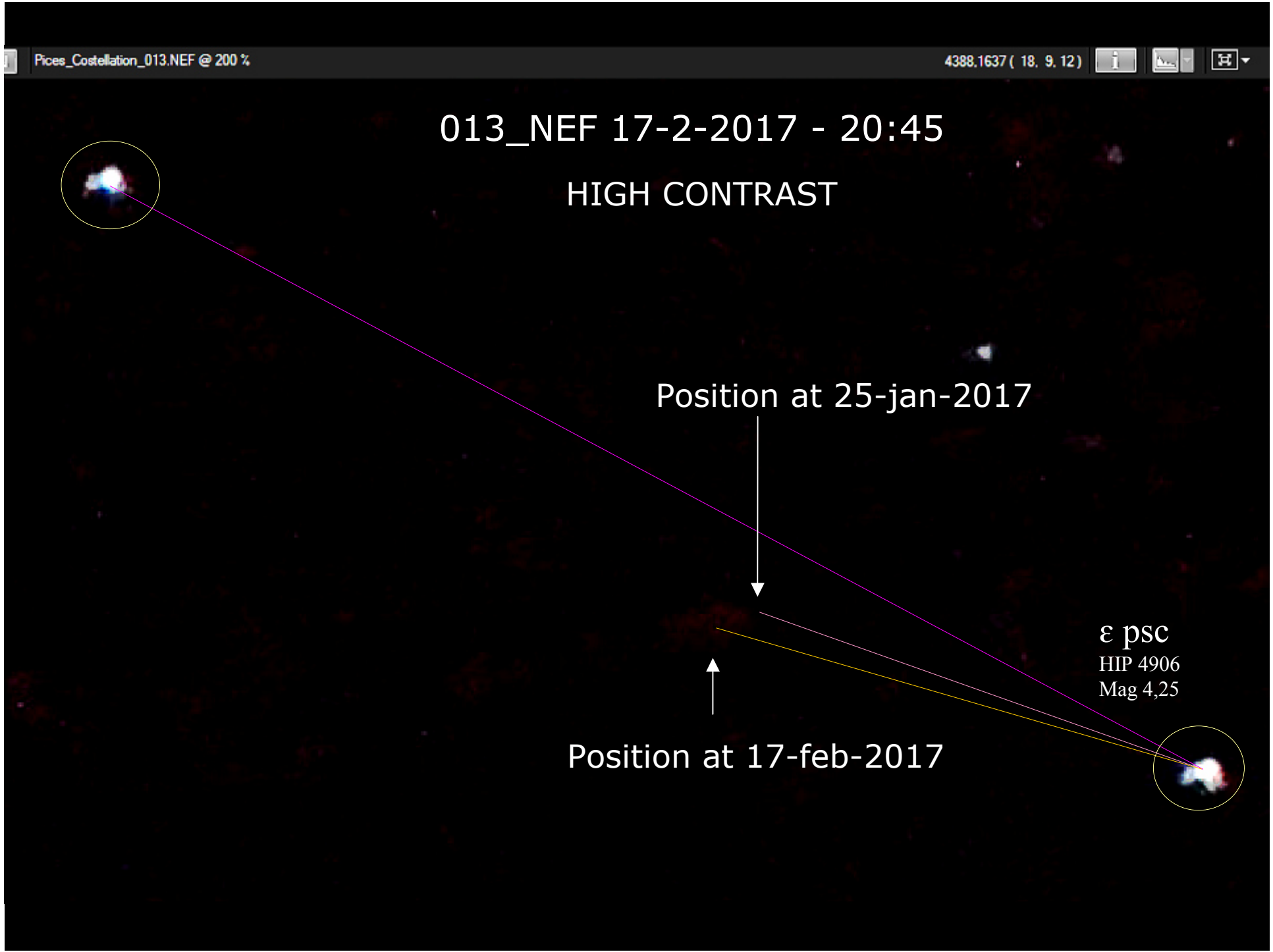
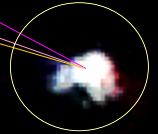


Position at 25-jan-2017



ϵ psc
HIP 4906
Mag 4,25

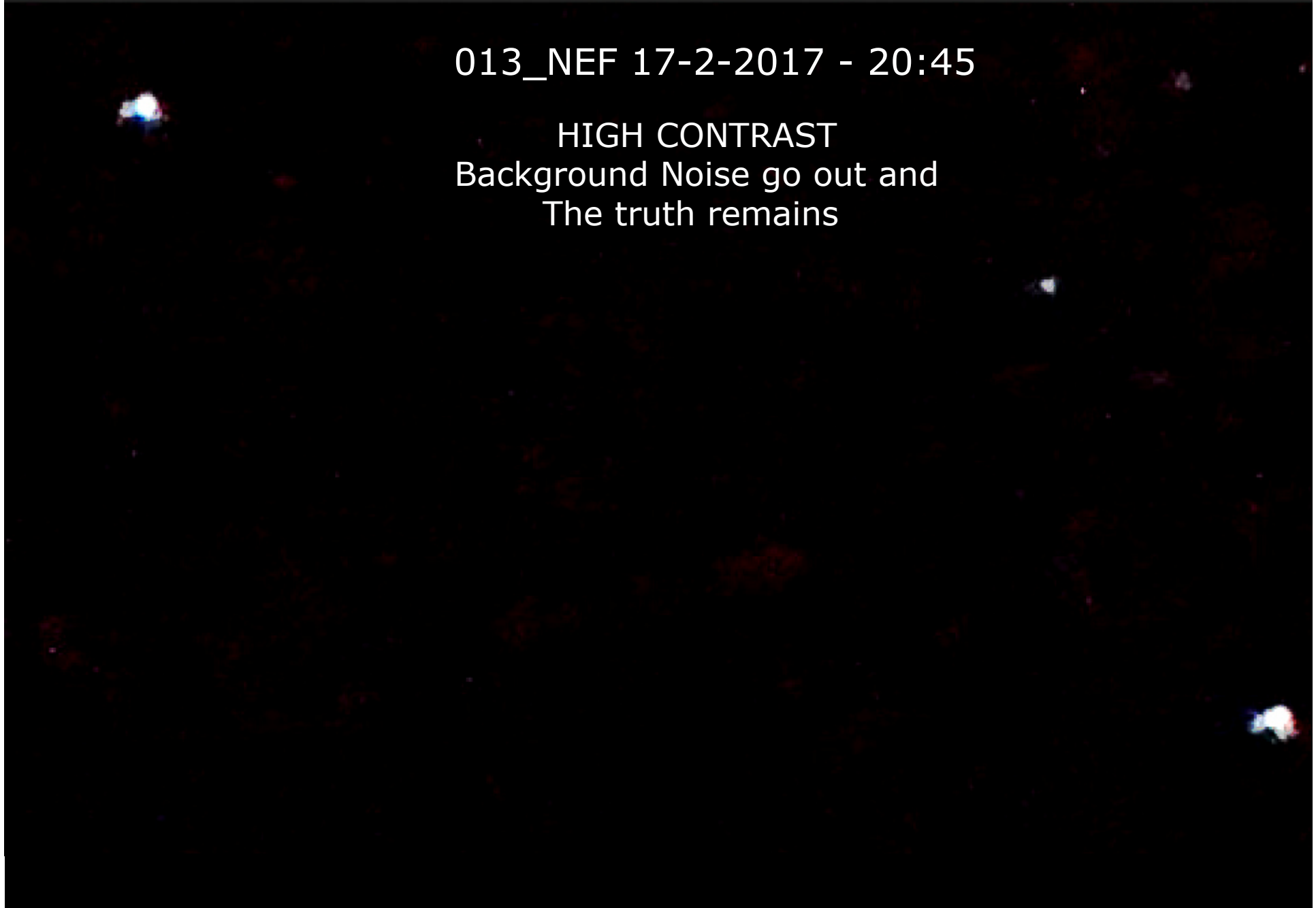
Position at 17-feb-2017





013_NEF 17-2-2017 - 20:45

HIGH CONTRAST
Background Noise go out and
The truth remains



ζ psc A
Mag 5.2

013_NEF 17-2-2017 - 20:45

HIGH CONTRAST
With references

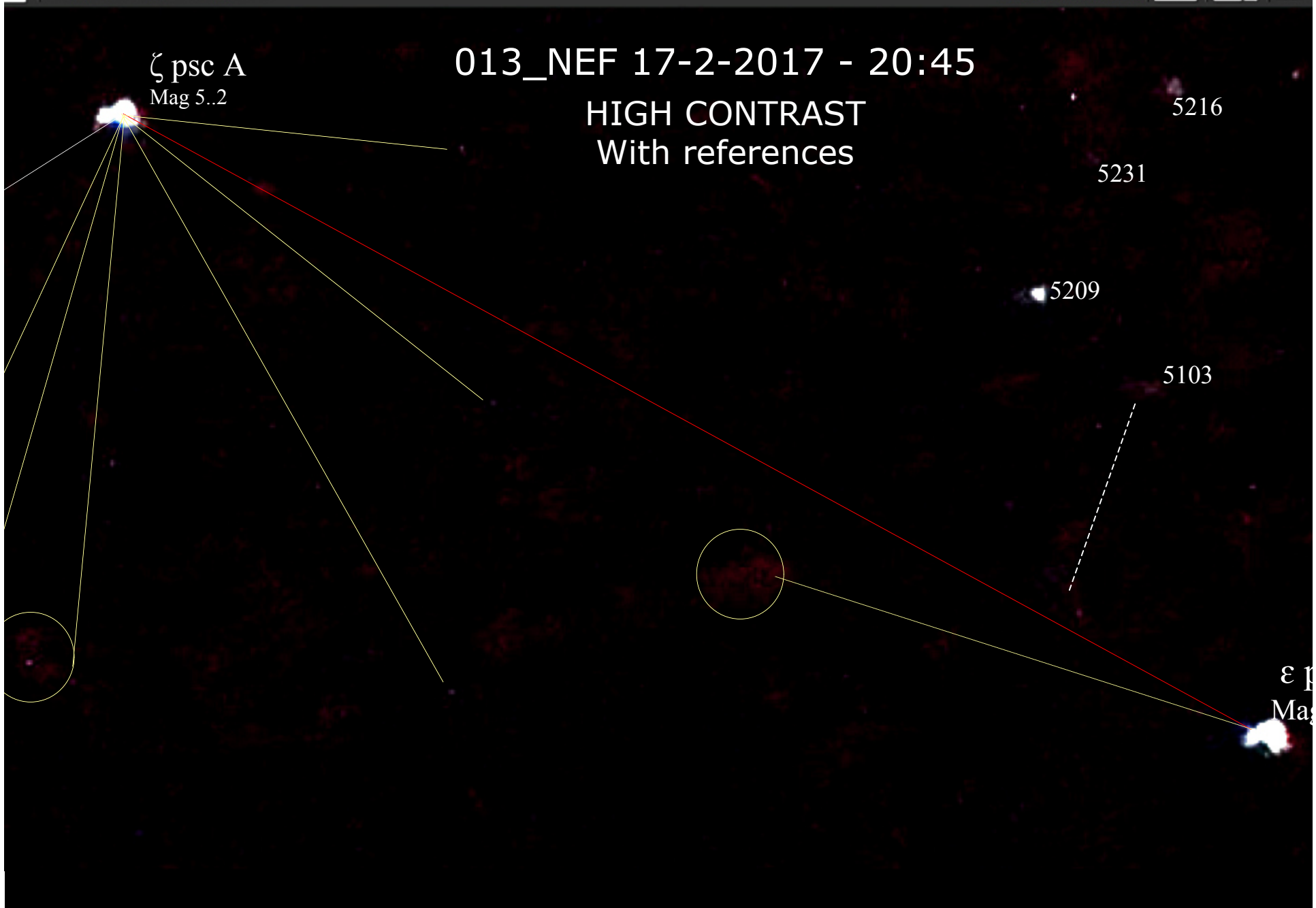
5216

5231

5209

5103

ϵ p
Mag



ζ psc A
Mag 5.2

013_NEF 17-2-2017 - 20:45

More HIGH CONTRAST
With references

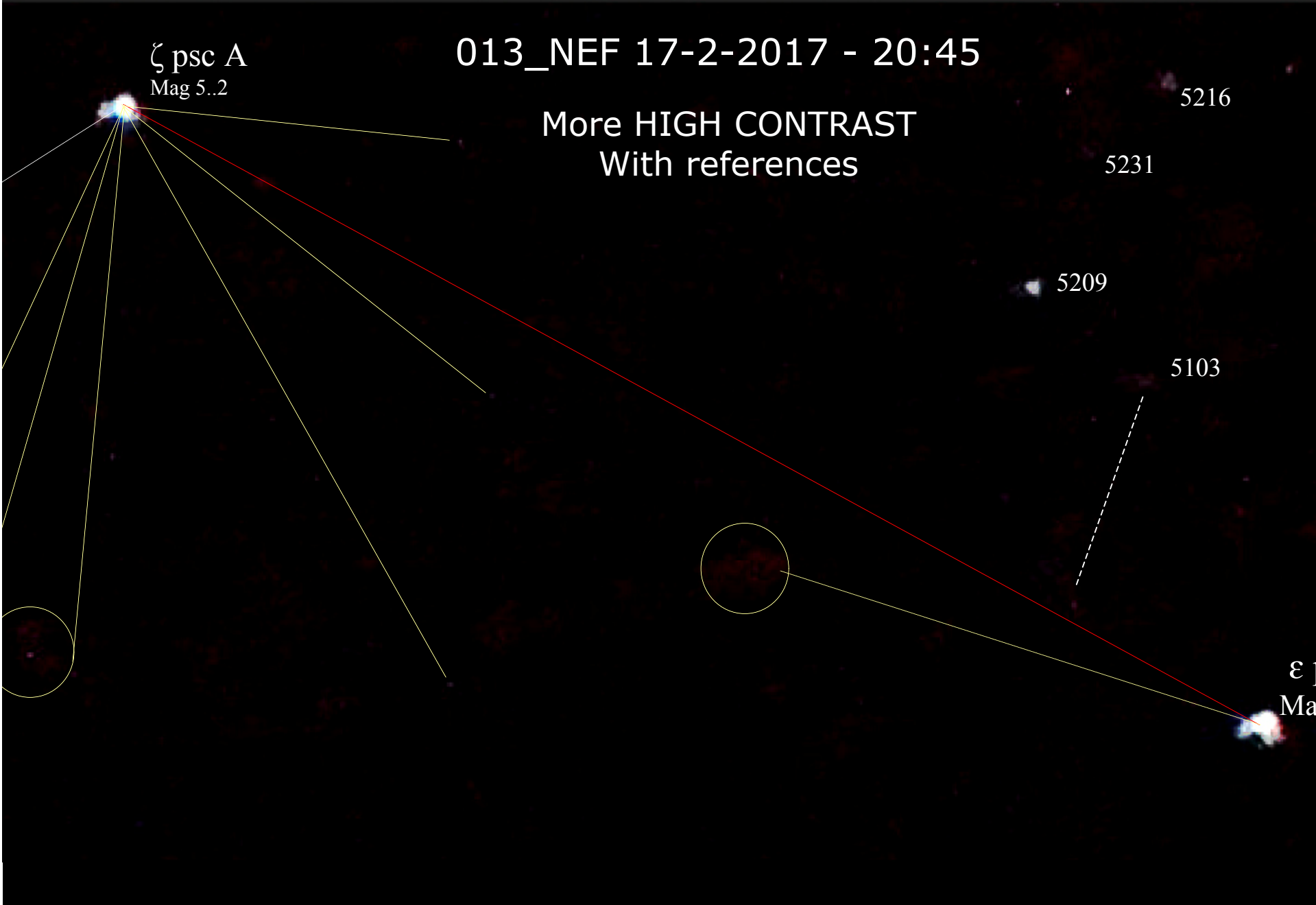
5216

5231

5209

5103

ϵ psc
Ma



ζ psc A
Mag 5.2

THE REAL SKY
With references to the photo taken

5231 5216

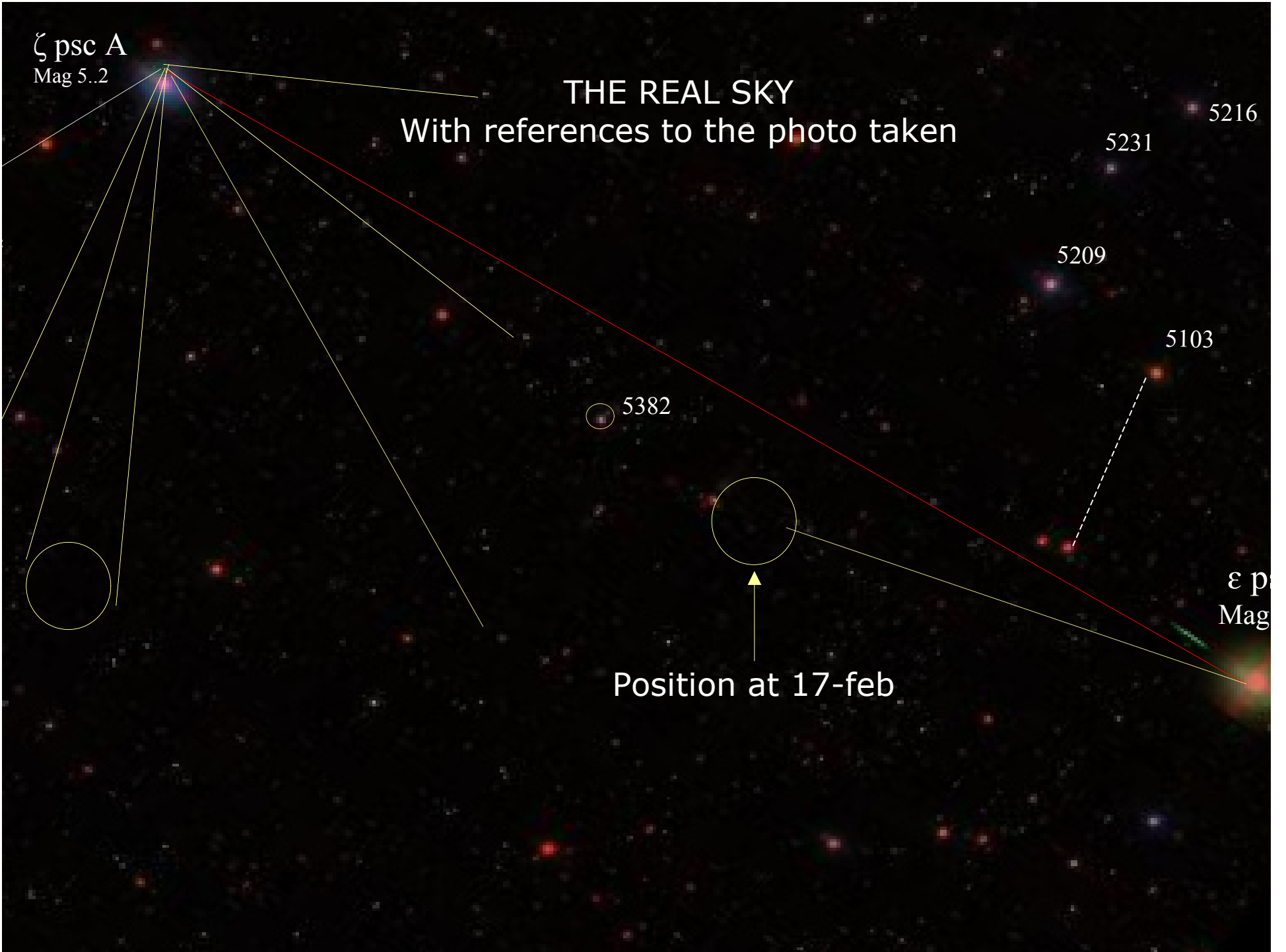
5209

5103

5382

ϵ p
Mag

Position at 17-feb



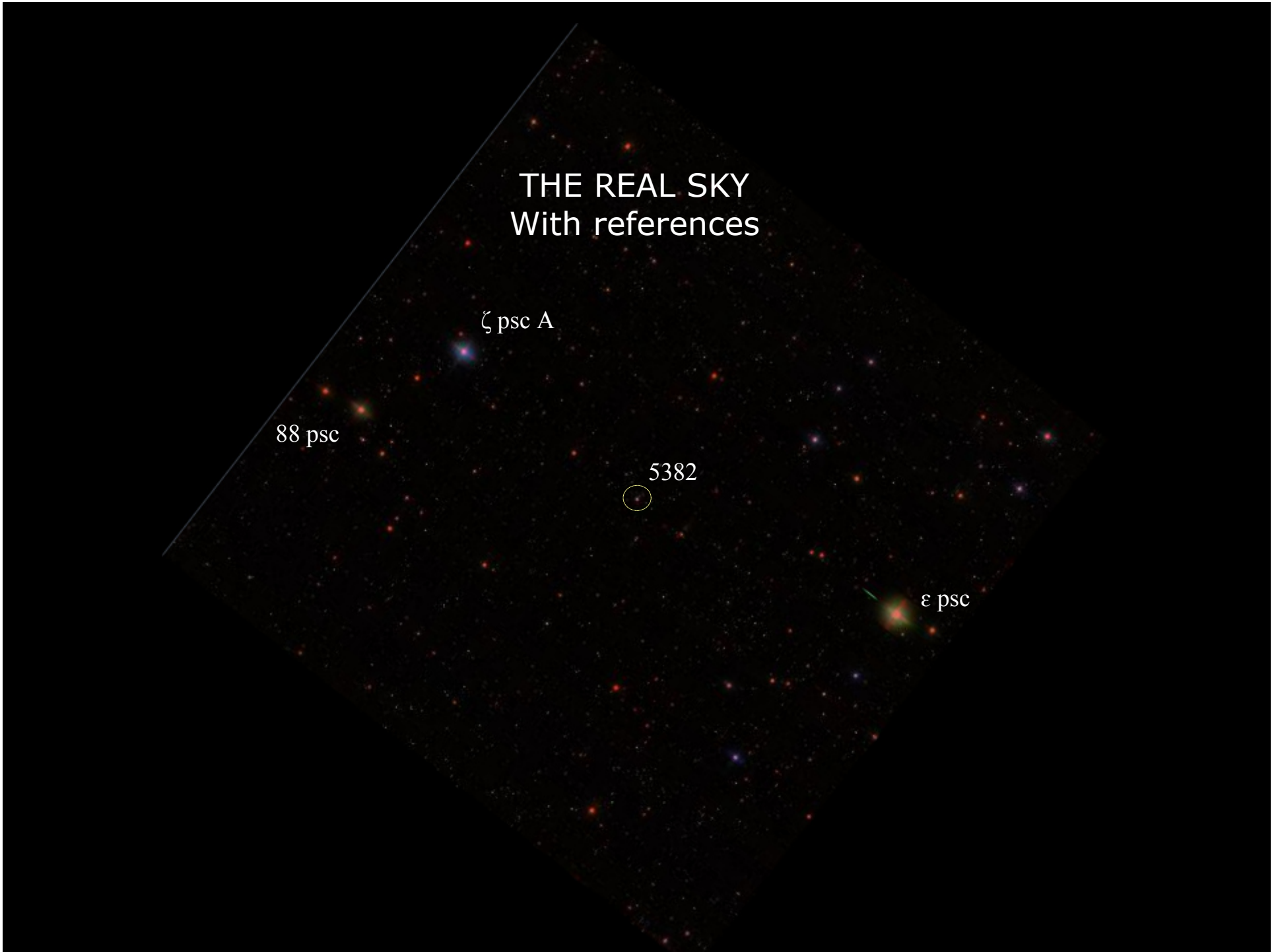
THE REAL SKY
With references

ζ psc A

88 psc

5382

ϵ psc



SKY SW simulation
With references

Back sky rotated
counterclockwise of 14°

013_NEF photo reference rotated
 2° clockwise to complete
matching

New Position at 17-2-17

ζ Psc A

5216

5231

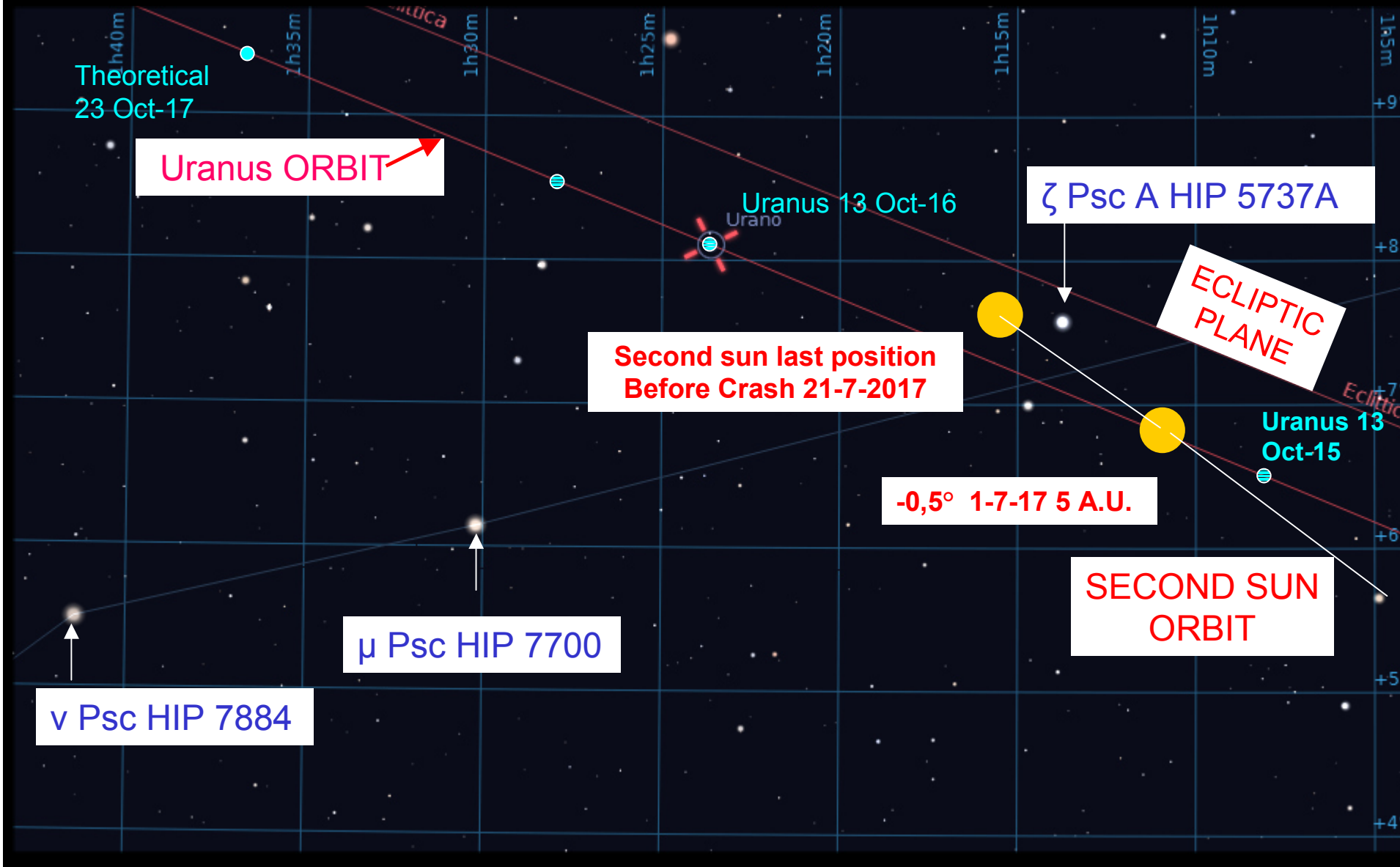
5209

5103

5382

ϵ Psc

SECOND SUN MOST PROBABLE POSITION IN THE SKY computed oct 2016 NOT CONSIDERING "APPARENT RETROGRADE" SECOND SUN ORBIT MOVEMENT



ORIGINAL IMAGE - NO CONTRAST With ϵ psc reference

Pices_Costellation_013.NEF @ 400 %

4338,1719 (23, 12, 18)



013_NEF 17-2-2017 - 20:45 @ 400% digital zooming

Position at 25-jan-17



Position at 17-feb-17

ϵ psc HIP 4906
Mag 4,25



ORIGINAL IMAGE - high CONTRAST With ϵ psc reference
013_NEF 17-2-2017 - 20:45 @ 400% digital zooming

Position at 25-jan-2017



Position at 17-feb-2017

ϵ psc HIP 4906
Mag 4,25



ORIGINAL IMAGE - high CONTRAST + high LUMINANCE with ϵ psc reference
013_NEF 17-2-2017 - 20:45 @ 400% digital zooming

Position
25-jan

THE APPARENT MOVEMENT

Due to a 3,5° ECLIPTIC PLANE BENDING?

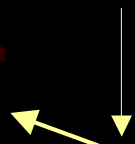
17- feb

ϵ psc HIP 490



ORIGINAL IMAGE – with more high CONTRAST to reduce background noise With ϵ psc reference

Position at 25-jan



Position at 17-feb



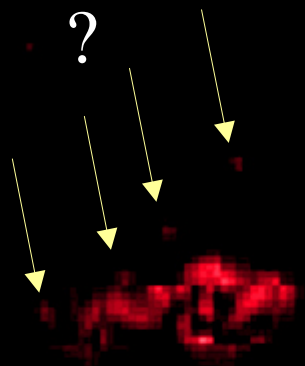
3,5° ECLIPTIC PLANE BENDING ?



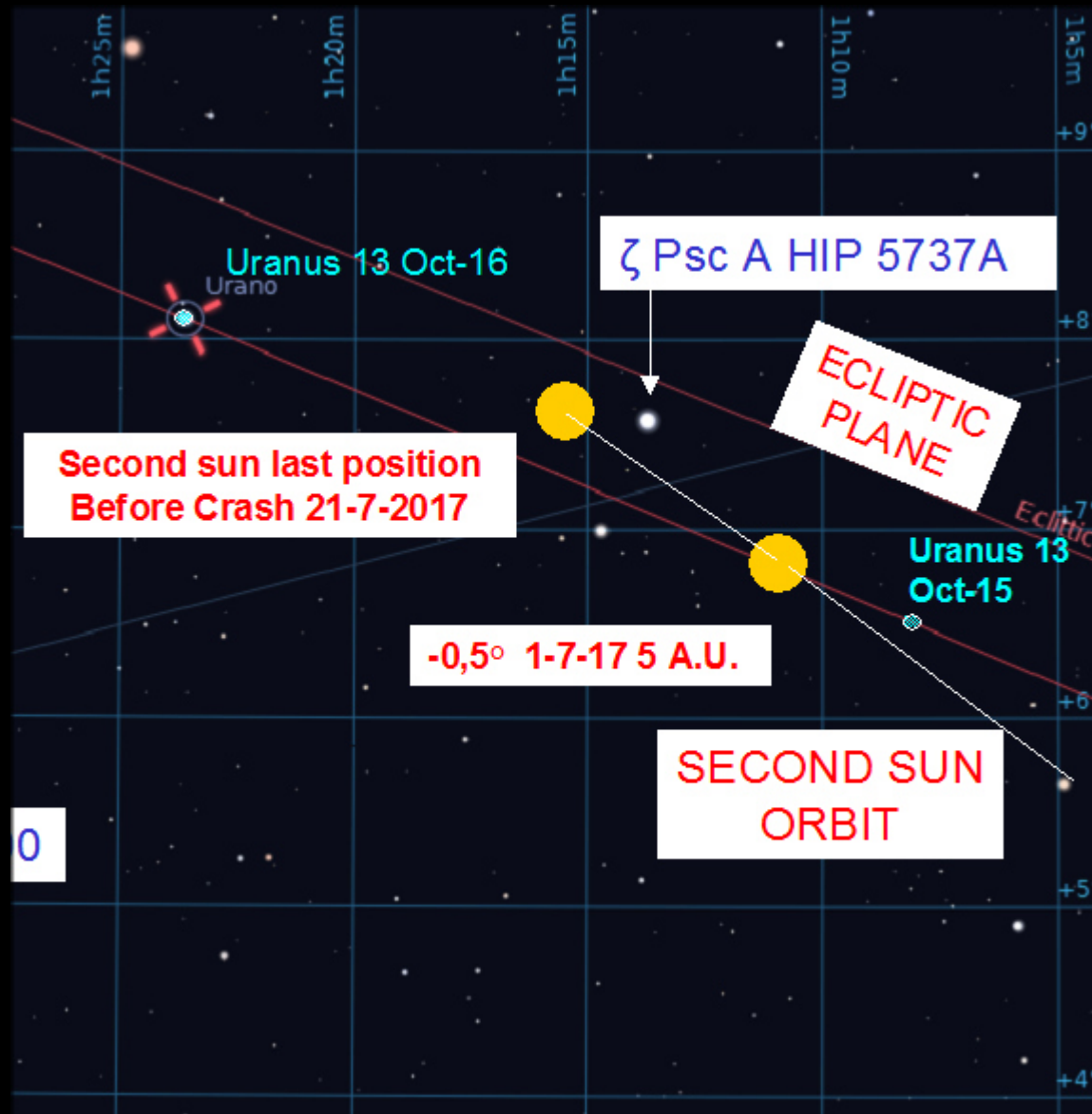
ϵ psc HIP 4906
Mag 4,25



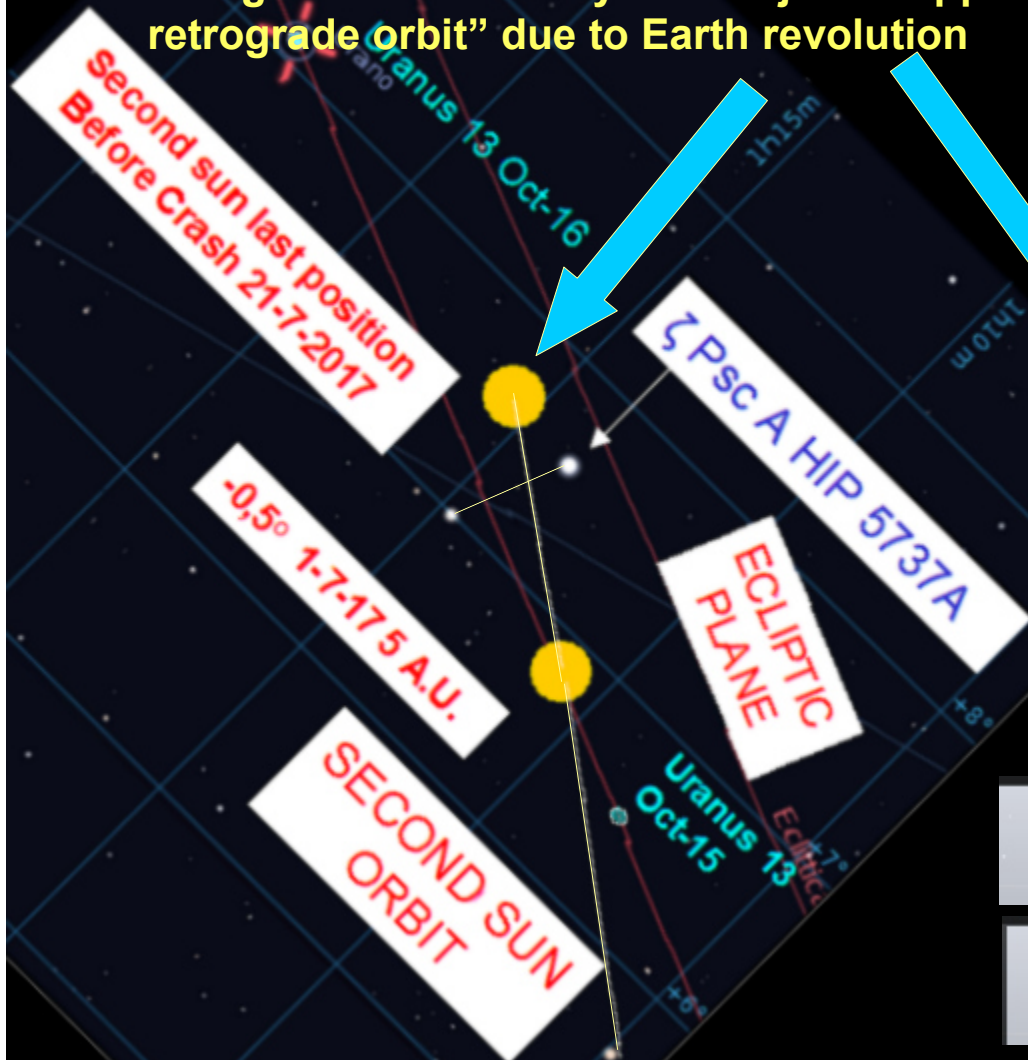
ORIGINAL IMAGE – with highest CONTRAST to ELIMINATE background noise with ϵ psc star eeference



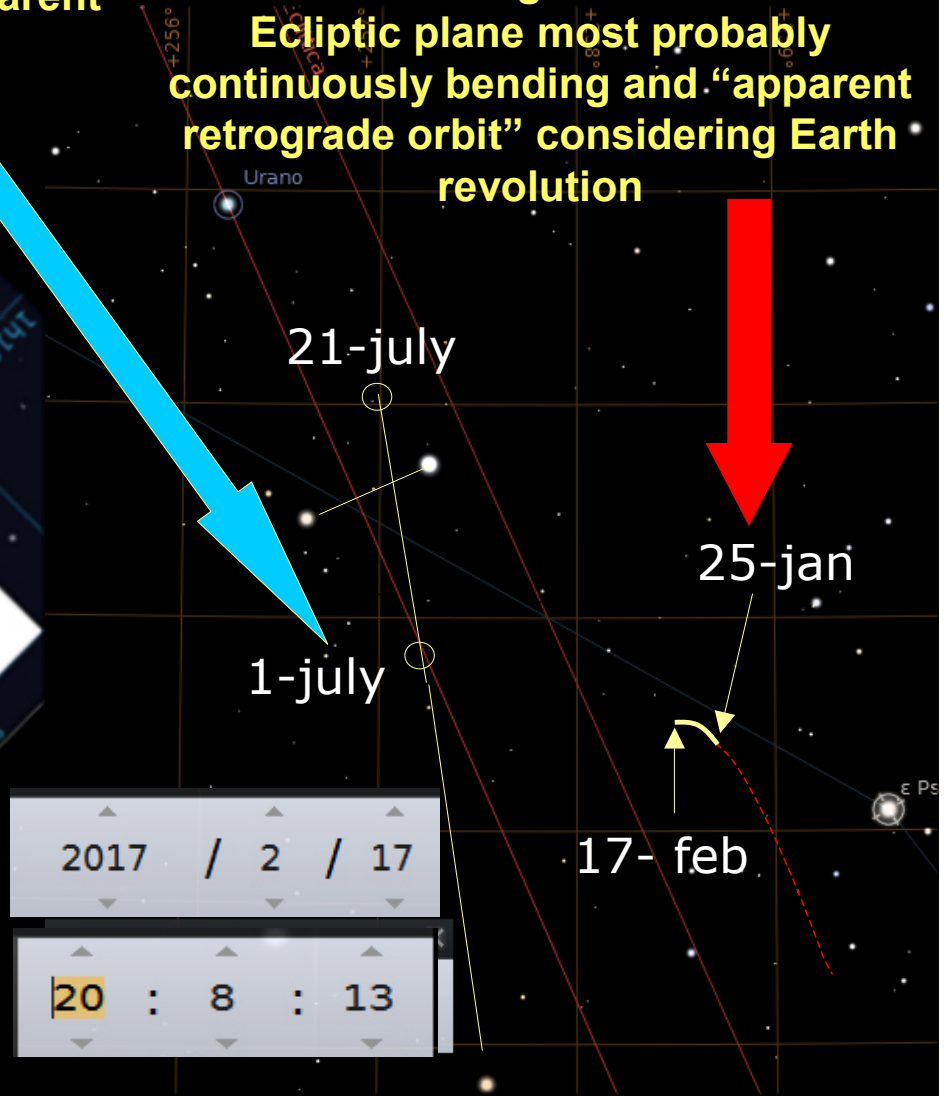
**SECOND SUN MOST PROBABLE POSITION IN THE SKY computed oct 2016
with fixed ecliptic plane – fixed Earth position without considering external solar
system objects “apparent retrograde orbit” movement due to Earth revolution**



SECOND SUN MOST PROBABLE theoretical POSITION IN THE SKY computed oct 2016 with fixed ecliptic plane – fixed earth position without considering external solar system objects “apparent retrograde orbit” due to Earth revolution



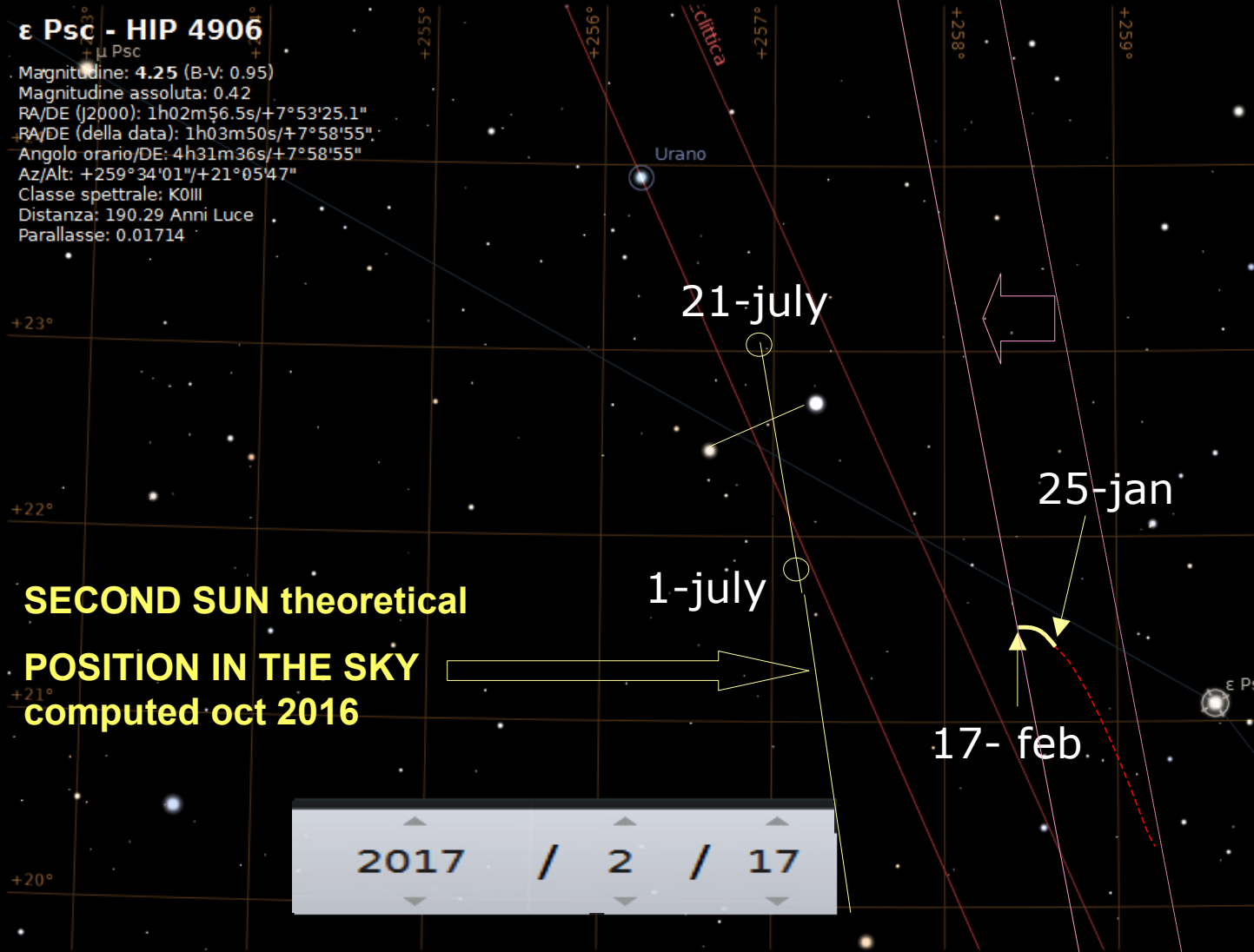
SECOND SUN REAL ORBIT- Rushing the end - Coming toward the SUN - Ecliptic plane most probably continuously bending and “apparent retrograde orbit” considering Earth revolution



More or less the
NEW ECLIPTIC PLANE position and angle
that doesn't MATTER ANYMORE

ε Psc - HIP 4906

ε Psc
Magnitudine: 4.25 (B-V: 0.95)
Magnitudine assoluta: 0.42
RA/DE (J2000): 1h02m56.5s/+7°53'25.1"
RA/DE (della data): 1h03m50s/+7°58'55"
Angolo orario/DE: 4h31m36s/+7°58'55"
Az/Alt: +259°34'01"/+21°05'47"
Classe spettrale: K0III
Distanza: 190.29 Anni Luce
Parallasse: 0.01714



SECOND SUN theoretical

**POSITION IN THE SKY
computed oct 2016**

1-july

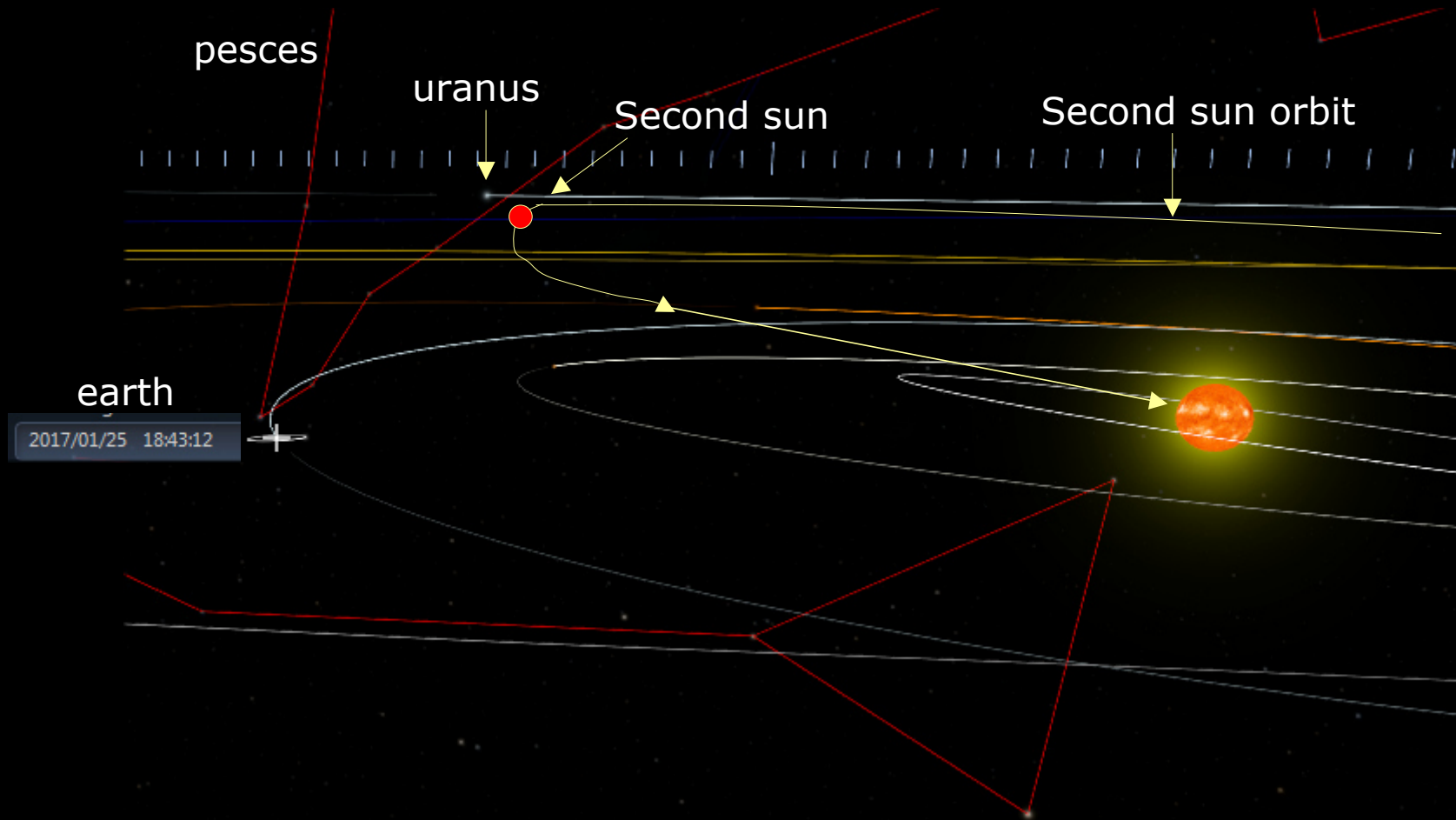
21-july

25-jan

17-feb

2017 / 2 / 17

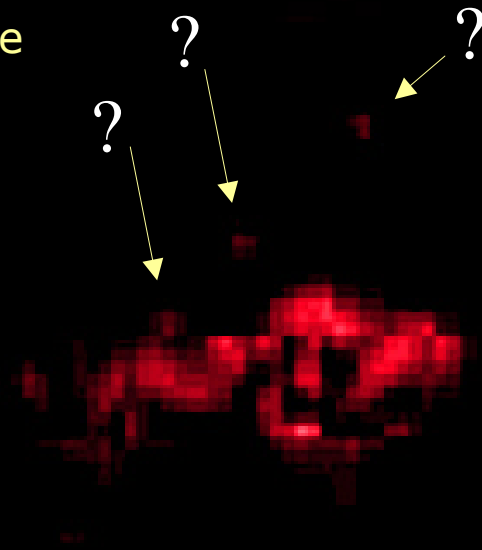
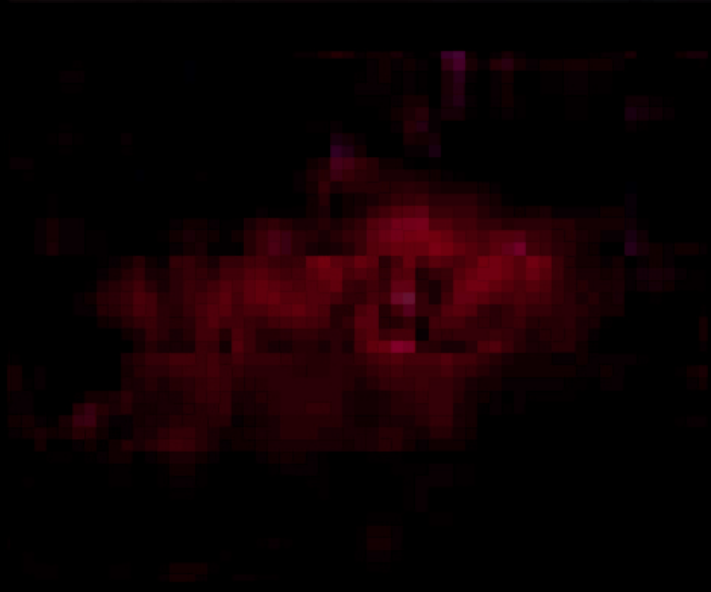
SECOND SUN ORBIT- Rushing the end - Coming toward the SUN PERSPECTIVE VIEW



SECOND SUN? ZOOMED AT MAX - Position at 17-feb-2017
More complex to focus. Not considering the external shadows we still have
to consider it BIGGER THAN 25-JAN 2017



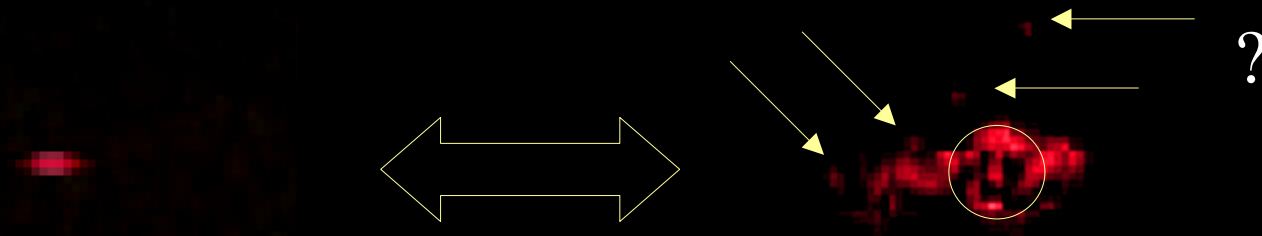
One thing is sure
This is not
Background noise



we still have to consider it BIGGER THAN 25-JAN 2017
At least the nucleus, the center part of it

25-JAN 2017

17 -FEB 2017



SAME ZOOMING

We thank the amateur astronomers round the world for their effort

**We show what we have and try to see what's there
MAYBE WE ARE RIGHT, but maybe more than right, only God knows**

THE UNIVERSE DOESN'T STAND UP AS A MATTER OF CASE

REMEMBER on the red IT WILL SHOW

PROVIDE YOUR CAMERA WITH INFRARED FILTERING ALSO

The pic taken was given in the normal light

The ones shown are out of tenths

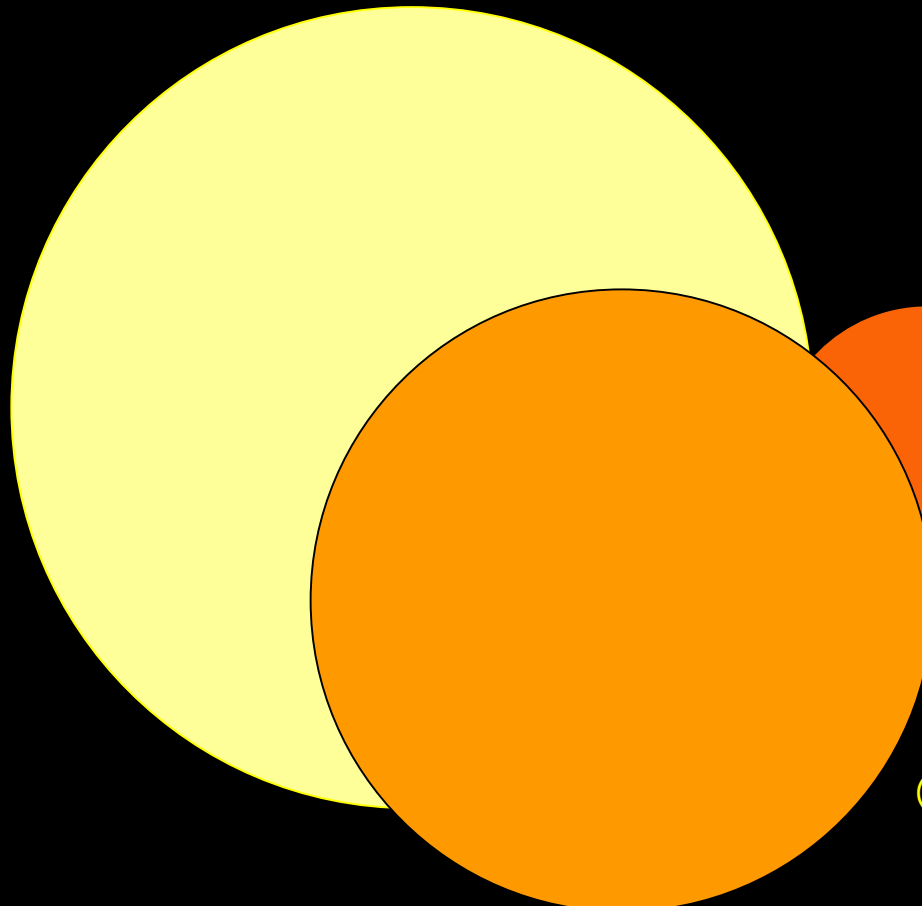
We do not want to convince you. Just a suggesstion

**Do not wait too long to convert yourself. When you will clearly see it
It will be to late for your salvation**

SUN toward SECOND SUN: the comparison

Do not hope to see it big. If you see it big, it's too late

If our Sun zoomed from Earth has this dimension



Second Sun with same zooming will be seen as follows at the following distances:

- 16 A.U. 2-1-2017
- 15 A.U. 13-2-2017
- 12 A.U. 11-4-2017
- 10 A.U. 13-5-2017
(as saturn to Sun distance)
- 5 A.U. 3-7-2017
(as Jupiter Sun distance)
- 3 A.U. 15-7-2017
(as ~1,8 times mars-sun distance)
- 2 A.U. 18-7-2017
(as ~1,6 times mars-sun distance)
- 1 A.U. 21-7-2017
(as Earth-Sun distance 17 hours form the crash)

SECOND SUN. SKY DIMENSION REFERRING TO 3 PLANETS and ourSUN

	DIAMETRO Km	DATA	distanza U.A.	arctg GRADI	arc seconds	arc minutes	arc minutes
	DIAMETER Km	DATE	Distance A.U.	arctg degrees	decimal	decimal	
SOLE - SUN	1.390.000		1	0,530925693	1911,33	31,86	
	diameter ratio to our Sun = 0,78						
SECOND SUN	1.085.200	01/01/2004	84	0,004934713	17,76	0,30	
SECOND SUN	1.085.200	24/08/2010	60	0,006908598	24,87	0,41	
SECOND SUN	1.085.200	04/08/2013	45	0,009211464	33,16	0,55	
SECOND SUN	1.085.200	29/10/2015	30	0,013817195	49,74	0,83	
SECOND SUN	1.085.200	13/10/2016	20	0,020725792	74,61	1,24	1' 15"
URANO - URANUS	50.000		20	0,00095493	3,44	0,057	
URANO - URANUS	50.000		19	0,001005189	3,62	0,060	4"
SECOND SUN	1.085.200	02/01/2017	16	0,02590724	93,27	1,55	1' 33"
SECOND SUN	1.085.200	13/02/2017	15	0,027634389	99,48	1,66	1' 39"
SECOND SUN	1.085.200	05/03/2017	14	0,029608274	106,59	1,78	
SECOND SUN	1.085.200	24/03/2017	13	0,031885833	114,79	1,91	
SECOND SUN	1.085.200	11/04/2017	12	0,034542985	124,35	2,07	
SECOND SUN	1.085.200	27/04/2017	11	0,037683255	135,66	2,26	
SECOND SUN	1.085.200	13/05/2017	10	0,041451579	149,23	2,49	
SATURNO	108.700		10	0,004152034	14,95	0,25	
SECOND SUN	1.085.200	25/05/2017	9	0,046057309	165,81	2,76	
SECOND SUN	1.085.200	06/06/2017	8	0,051814469	186,53	3,11	
SECOND SUN	1.085.200	16/06/2017	7	0,059216531	213,18	3,55	
SECOND SUN	1.085.200	25/06/2017	6	0,069085944	248,71	4,15	
SECOND SUN	1.085.200	03/07/2017	5	0,082903115	298,45	4,97	
GIOVE - JUPITER	138.000		5	0,010542423	37,95	0,63	
SECOND SUN	1.085.200	10/07/2017	4	0,103628854	373,06	6,22	
SECOND SUN	1.085.200	15/07/2017	3	0,138171688	497,42	8,29	
SECOND SUN	1.085.200	18/07/2017	2	0,207257029	746,13	12,44	
SECOND SUN	1.085.200	21/07/2017	1	0,414508634	1492,23	24,87	
MARS	6.800		2	0,001298704	4,68	0,08	

JESUS SAID: BEFORE THE GREAT WARNING THE EARTH AXIS WILL TILT

1200 days	1230 days	1260 days	1290 days	DANIELS days	1335 days
13-2-17	13-3-17	13-4-17	13-5-17	21-7-17	RESURRECTIO
1 Month	1 Month	1 Month	1025 hours (~43gg)	(~24-6-17)	(~26-6-17)
	GREAT WARNING + 1st Rapture of Elects	2nd Rapture of elects	100° FATIMA		

On a very cold night, 10 minutes before midnight, A GREAT QUAKE will shake the earth for 8 hours. This will be the third of God's signal to those who govern the Earth. Those close to the Lord and blessed, with no doubt in the Faith, will spread this prophetic message the Holy Mother Mary announced at Fatima, will have no fear. **"OH GOD, FORGIVE OUR SINS, save us from FIRE OF HELL, TAKEN IN HEAVEN ALL SOULS, ESPECIALLY THE MOST 'IN NEED OF YOUR HOLY MERCY. OH SWEET MOTHER MARY, intercede for us sinners! WE Love YOU, SAVE OUR WORLD.**" Those who believe in these Holy Words, taught by Our Lady to the three shepherd children, also transmit this Holy Message to others. I JUST DO NOT HAVE TO FEAR NOTHING IN GREAT DAY OF THE LORD.

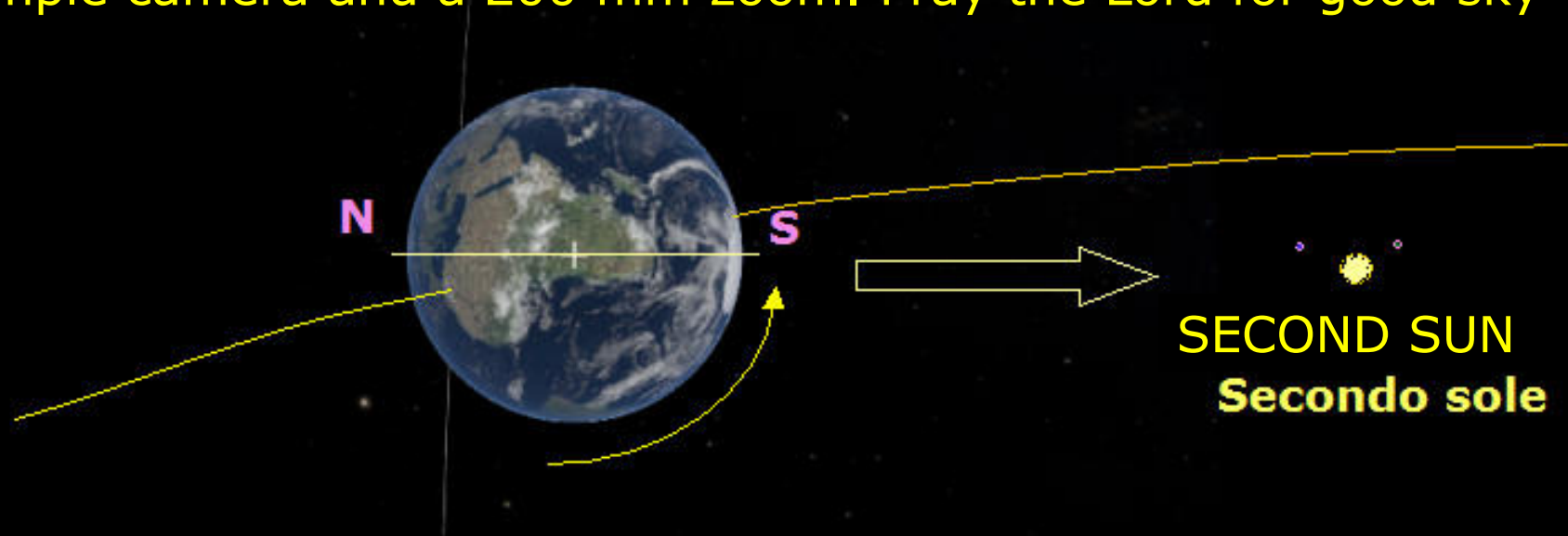
This file can be downloaded on the following web pages:

<http://www.royaldevice.com/1/DATA/SECOND-SUN-SECOND-PHOTO.pdf>

<http://www.royaldevice.com/1/cropcircle77.htm>

All the SECOND SUN happenings in English given by the Holy Virgin Mary in Anguera is at: <http://www.royaldevice.com/second-sun.html>

Because when "HUBBLE's no more" at least you know you can use a simple camera and a 200 mm zoom. Pray the Lord for good sky



For the scientists, who ever they are, there is no possibility to find out the SECOND SUN ORBIT, if they do not have the DATA. So they need to continuously monitor the Second Sun arrival till it crashes ONTO our SUN.

We gave them the DATA. Out of this data, everything is rubbish to fool people and of course themselves.

Without DATA, there are let's say, hundreds or thousands or millions of possibilities to miss everything.

The proof? Very easy to give:

They can say to have the points of 1983 to 2017 Second Sun MOVEMENT that means 34 year movements (let's say they have all of them) over 4217,8 years SINGLE CLOSED orbit. That means

NOTHING

They will fool as they are on the age of UNIVERSE

THE REAL TRUTH? THE ORBIT IS NOT CLOSED

34 year movements



**Where is this bit
Placed on the
real orbit?**

**Second SUN 6004 year movements
on a NO CLOSED ORBIT**

JUST TOSS THE COIN 6004 times

Maybe one time you can get it

Then use all your algorithms and astrophysic rules

All the world is waiting for you

References of many pdf files referring the Second SUN, the timings, the day per hour reduction etc.:

<http://www.royaldevice.com/1/data/nibiru-now-the-real-truth.pdf>

<http://www.royaldevice.com/1/data/SECOND-SUN-ORBIT-DATA-25-5-1985-21-7-2017.xls>

<http://www.royaldevice.com/calendario/SECOND-SUN-FOUND-1.pdf>

www.royaldevice.com

<http://www.royaldevice.com/lettere23.htm>

<http://www.royaldevice.com/calendario2017.html>

<http://www.royaldevice.com/fg-calcolo-21072017-esteso.htm>

<http://www.royaldevice.com/1/77.htm>

And if you will still be here you will say:
"IT WAS ALL TRUE"

I HOPE IN THE RAPTURE OF ELECTS

JESUS I HOPE AND TRUST IN YOU and your Holy Mother